

PART OF THE NE.1/4, OF SECTION 8, T.7N., R.2E., S.L.B. & M.
SUMMIT EDEN PHASE 1C AMENDMENT 10

174

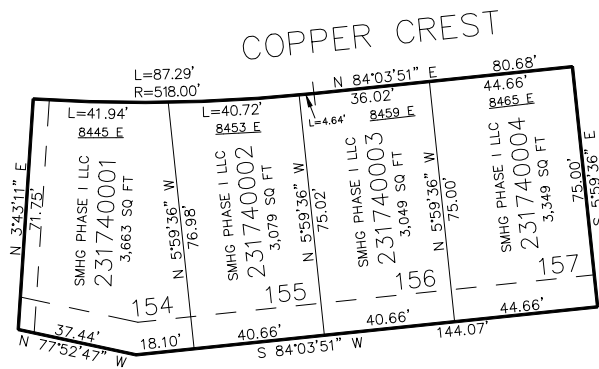
IN WEBER COUNTY

TAXING UNIT: 491

SCALE 1" = 30'

SEE PAGE 12

SEE PAGE 150



SEE PAGE 150

SEE PAGE 150

10' UTILITY & DRAINAGE EASEMENTS EACH
 SIDE OF PROPERTY LINES AS INDICATED
 BY DASHED LINES EXCEPT AS OTHERWISE
 SHOWN.

FOR COMPLETE SURVEY DATA SEE
 ORIGINAL DEDICATION PLAT IN
 BOOK 97, PAGE 98 & 99 OF RECORDS.